



StratoBrace®

INSTALLATION GUIDE STRATOBRACE

YOU WILL NEED



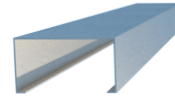
Stratobrace®
Top Hat



90° ceiling bracket and STEM
(as per specification)



Black Brackets



Steel Stud for Brace Arms
(as per specification)

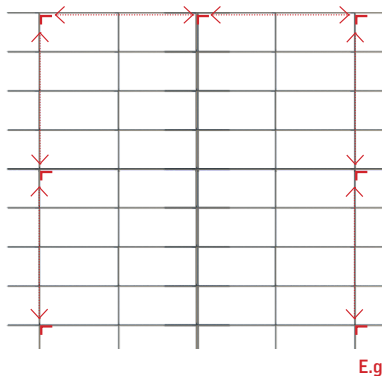


Fixings
(Rivet or 10g TEK screws)

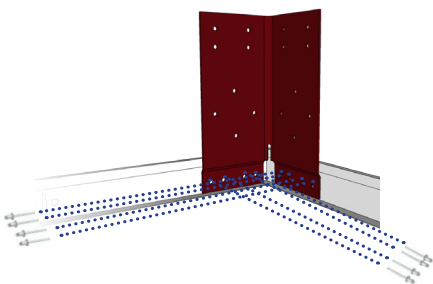
STEP ONE



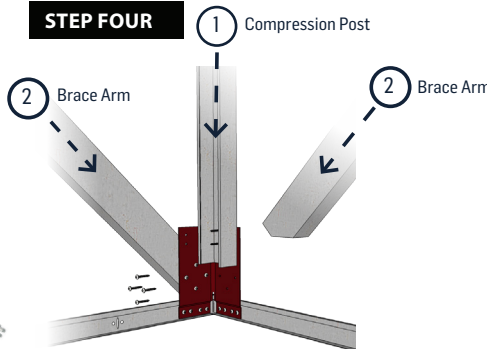
STEP TWO



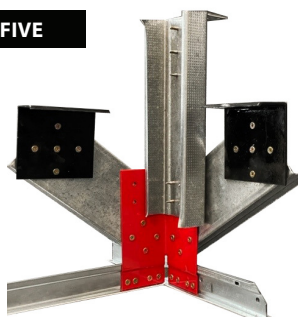
STEP THREE



STEP FOUR



STEP FIVE



STEP ONE

Prepare grid: Layout grid to fit your specified design (e.g. 600x600 or 600x1200).

STEP TWO

Identify StratoBrace positions along the grid.
Note: Positions depend on specification.

*On a 600x600 grid, ensure StratoBrace is fixed to main tee.

STEP THREE

Use 4 rivets on each tee to fix StratoBrace into Tee connection point.

Note: 10G tech screws may be used as an alternative to rivets, however these may damage the tile.

STEP FOUR

Attach vertical compression post and brace arms to StratoBrace using 4 x 10G tec screws at each connection.

The brace arms should be 40° - 50° from horizontal. For a 45° angle brace, cut your steel stud bracing material to length using the following formula. Length of bracing arm = 1.41 times the Height (vertical distance of bracket to structure).

STEP FIVE

Screw 90° ceiling bracket to vertical brace arm along the side face of stud using 4 x 10G tec screws, and black U bracket to the 45° brace arms. Fix bracket to ceiling structure using appropriate fixings.